

Rosemount 2051 Pressure Transmitter

Pressure, Flow, and Level Measurement



Measure Pressure with Confidence

ROSEMOUNT


EMERSON
Process Management

Experience Rosemount Reliability

Emerson brings unmatched pressure measurement experience, reliability, and innovation to deliver increased plant productivity, safety, and a lower total cost of ownership. The Rosemount 2051 pressure transmitter family delivers on our global legacy of highly reliable field-proven products.

Utilizing advanced manufacturing techniques based on Lean and Six Sigma quality processes, the 2051 is manufactured at seven strategic ISO 9001:2008 certified facilities around the world.



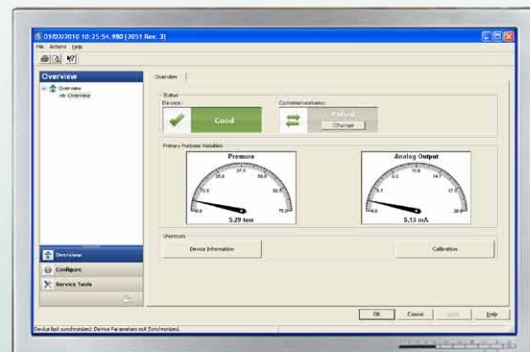
Fulfill All Your Application Needs

Improve quality and minimize inventory with industry established specifications and a complete breadth of offering.

- Reference accuracy of 0.065% of span, 5 years installed stability, rangeability of 100:1
- Differential, gage and absolute pressure measurement
- Intelligent device diagnostics for easier troubleshooting
- 4-20mA HART, FOUNDATION™ fieldbus, PROFIBUS PA, 1-5Vdc HART protocols
- EDDL and FDT/DTM Support

Information for Better Decisions

Task-oriented, user optimized Device Dashboards help configure, calibrate, commission and maintain devices in less time with better results.



2051C Coplanar Pressure



2051C Traditional Pressure



2051T Inline Pressure



2051L Level

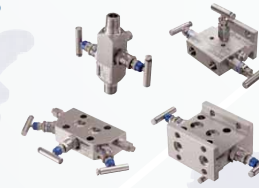


2051CF Flowmeters



Flexible Process Connections

- Choose from a complete offering of integral, conventional and in-line manifold connection configurations
- Easily connect to existing bi-planar installations with traditional flanges



Robust in the Harshest Environments

- Improve reliability in hot, viscous or corrosive processes with a seal system
- Advanced manufacturing techniques ensure an air-free, leak-tight system that maintains stability over time



Integrated Flowmeter Solutions

- Improve flow measurement with an Annubar™, Conditioning orifice, compact orifice or integral orifice flowmeter
- Reduce installed costs with integrated flow solutions that are fully configured, leak-tested and ready to install



Reduce Your Engineering and Installed Costs

Eliminate costly on-site assembly and reduce leak-points with the flexible coplanar design. The fully configured 2051 assembly arrives leak-tested, calibrated and installation ready.

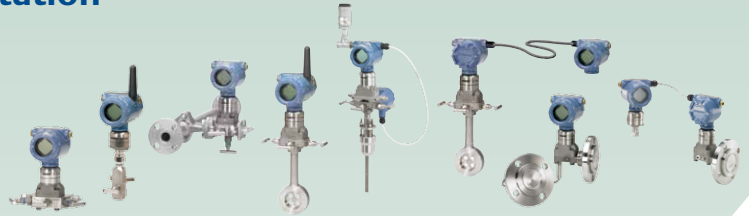
To experience the Rosemount difference visit www.rosemount.com/2051

Rosemount Pressure Measurement Portfolio

Industry-leading pressure, flow, and level solutions

Rosemount 3051S Series of Instrumentation

- Highest field performance and reliability
- IEC 62591 WirelessHART® for cost effective installations
- MultiVariable™ technology enables fully compensated mass and energy flow
- Advanced Diagnostics provide coverage from the process to the host system
- Electronic Remote Sensors deliver optimized level measurement



Rosemount 3051 Pressure Transmitters

- Proven industry standard with over 4 million installed
- Best-in-class performance, reliability, and safety
- Complete line of integrated flanges, manifolds, diaphragm seals, and flow elements



Rosemount 2051 Pressure Transmitters

- Foundation of reliable and safe measurement
- Maximize installation flexibility with Coplanar™ platform



Increase Your Competitiveness at www.rosemount.com/Pressure

The Emerson logo is a trademark and service mark of Emerson Electric Co. Rosemount and the Rosemount logotype are registered trademarks of Rosemount Inc. All other marks are the property of their respective owners. ©2011 Rosemount Inc. All rights reserved.

**Emerson Process Management
Rosemount Measurement**
8200 Market Boulevard
Chanhausen MN 55317 USA
Tel (USA) 1 800 999 9307
Tel (International) +1 952 906 8888
Fax +1 952 949 7001

Emerson Process Management
Blegistrasse 23
P.O. Box 1046
CH 6341 Baar
Switzerland
Tel +41 (0) 41 768 6111
Fax +41 (0) 41 768 6300

Emerson FZE
P.O. Box 17033
Jebel Ali Free Zone
Dubai UAE
Tel +971 4 811 8100
Fax +971 4 886 5465

**Emerson Process Management Asia
Pacific Pte Ltd**
1 Pandan Crescent
Singapore 128461
Tel +65 6777 8211
Fax +65 6777 0947
Service Support Hotline : +65 6770 8711
Email : Enquiries@AP.EmersonProcess.com